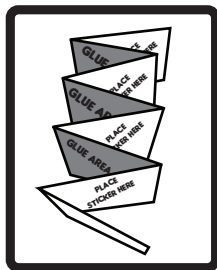
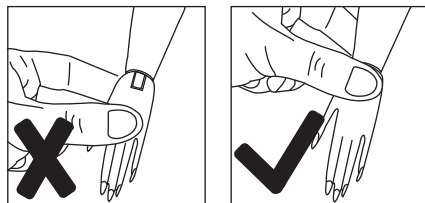


MAGAZINE ASSEMBLY

Each doll comes with a collectible sticker. Collect the stickers and display them in the mini-magazine.



Fold in an accordian style and glue the areas where it says "GLUE AREA." Place the stickers on the sides that say "Place sticker here."



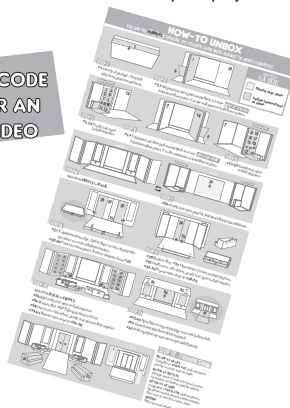
TIPS:

- When removing the hands to dress doll, pinch the wrists' joints and gently pull. **DO NOT PULL FROM THE FINGERS.**
- Your doll is articulated, but the knee joint will need to be loosened. To loosen the knee joint, use slight force to pull the leg forward until the knee clicks. Then, push the leg back and it will click again.

UNBOXING GUIDE

Follow the steps on the guide (included) to open all the boxes and to setup for play.

SCAN THE QR CODE ON PAGE 1 FOR AN UNBOXING VIDEO



Please keep this manual as it contains important information.



0522-0-E/INT
Printed In China

www.LOLsurprise.com
©2022 MGA Entertainment, Inc.
L.O.L. SURPRISE! O.M.G. OUTRAGEOUS MILLENNIAL GIRLS FASHION SHOW MEGA RUNWAY™ is a trademark of MGA in the U.S. and other countries. All logos, names, characters, likenesses, images, slogans, and packaging appearance are the property of MGA.

MGA Entertainment, Inc.
9220 Winnetka Ave., Chatsworth, CA 91311
U.S.A.
(800) 222-4685

MGA Entertainment UK Ltd.
50 Presley Way, Crownhill, Milton Keynes,
MK8 0ES, Bucks, UK
+ 0800 521 558

MGA Entertainment (Netherlands) B.V.
Baronie 68-70, 2404 XG Alphen a/d Rijn, The Netherlands
Tel: +31 (0) 172 758038

Imported by MGA Entertainment Australia Pty Ltd
Suite 2.02, 32 Delhi Road
Macquarie Park NSW 2113
1300 059 676

The preferred method of contact for Customer Service is through our e-mail contact form at www.mgae.com



SKU: 584339



AGES 3+
ADULT SUPERVISION REQUIRED

WARNING:
CHOKING HAZARD—Small parts.
Not for children under 3 years.

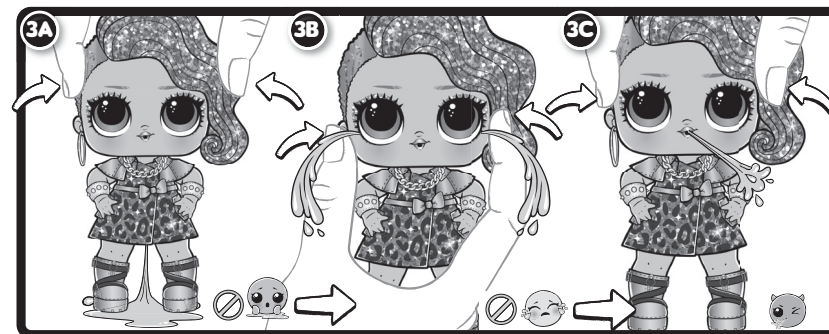
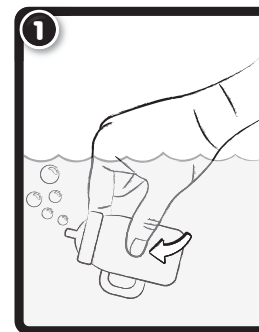
Illustrations are for reference only. Styles may vary from actual contents.

Please remove all packaging including tags, ties & tacking stitches before giving this product to a child.

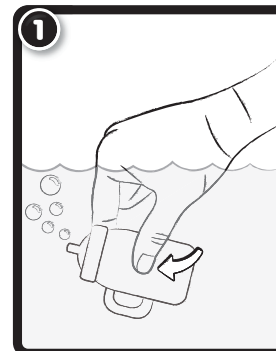
SCAN TO VIEW
UNBOXING VIDEO:



DOLL FEATURES



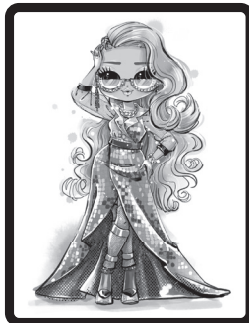
PET FEATURES



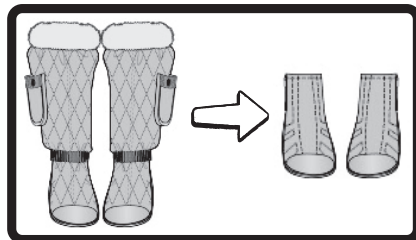
FASHION STYLES



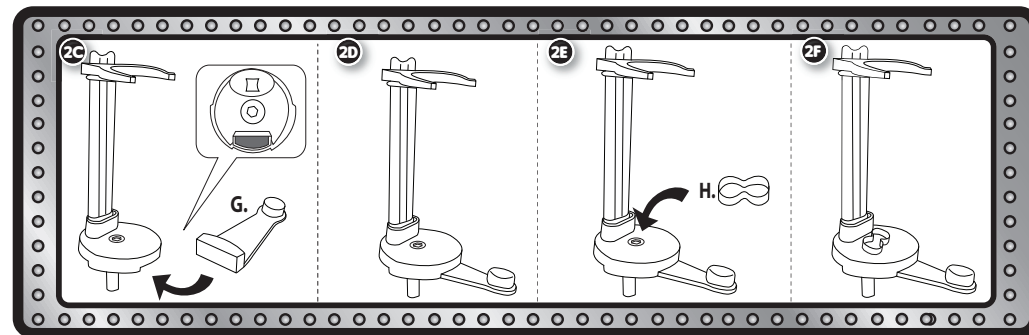
Stylez's skirt is reversible allowing for different fashion looks.



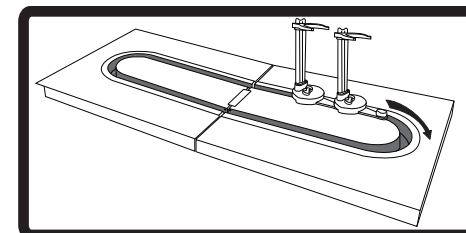
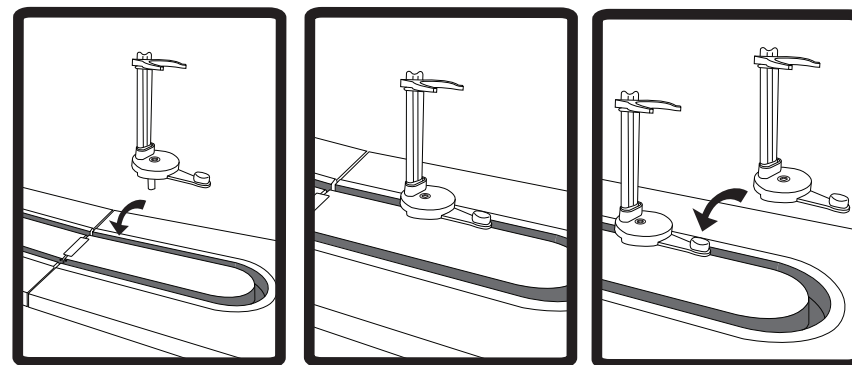
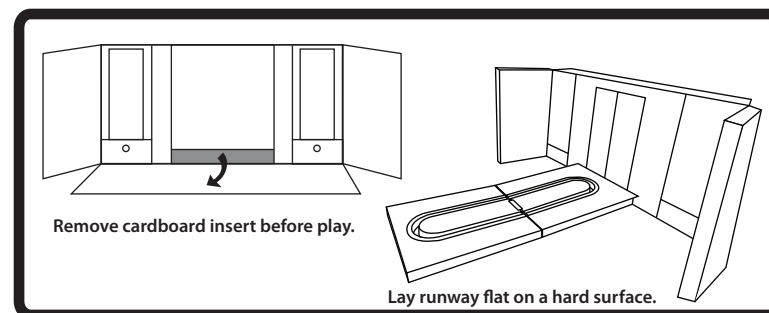
Sashay's sleeves can be removed and used as leg warmers. Her halter dress is also reversible.



Stylez's boot covers can be removed to create a different shoe style. Each cover is marked with **L**, for left, or **R**, for right, to place on the correct boot.

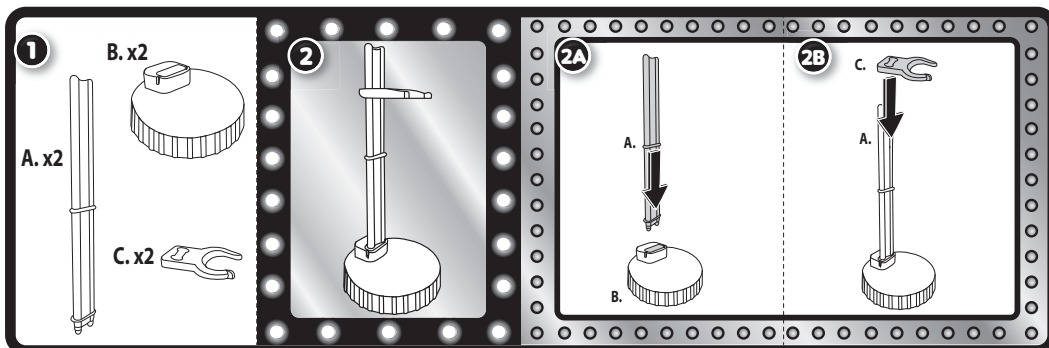


RUNWAY ASSEMBLY AND PLAY



Once the stands are connected, pull first stand to replicate a runway walk with your dolls.
Note: As you connect each stand, avoid putting OMG doll last.

DOLL STAND



RUNWAY STAND

